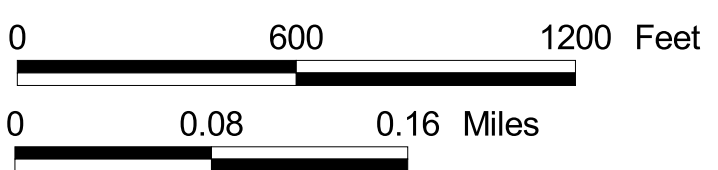


Walking Community Study

- Biking Study**
- Very Good (Blue)
 - Good (Green)
 - Fair (Yellow)
 - Poor (Orange)
 - Very Poor (Red)
 - Roads - Under Study (Dark Red)
 - Palmetto Trail (Dotted Line)
- Destinations**
- City Buildings (Light Blue)
 - Commercial (Light Green)
 - County Buildings (Light Orange)
 - Parking Garages (Light Yellow)
 - Parks (Light Green)
 - Colleges (Light Purple)
 - Public Subsidized Housing (Light Blue)
 - Elementary / Junior High Schools (Light Purple)



Walking Rating

Rating	Color	Mileage
Very Good	less than 3.0 (Blue)	= 29 miles
Good	3.00 - 5.9 (Green)	= 9.3 miles
Fair	6.0 - 8.9 (Yellow)	= 33.92 miles
Poor	9.0 - 26.0 (Orange)	= 35.12 miles
No Sidewalk	99.0 (Red)	= 8.53 miles



Disclaimer: This map is a product of the Palmetto Conservation Foundation and the Spartanburg Community Partnership. Reasonable efforts have been made to ensure the accuracy of the map. These agencies expressly disavow any responsibility or liability for damages from use of this map.

Sources: Spartanburg County Planning Dept.
 SC Dept. of Public Safety
 SC Dept. of Transportation
 Spartanburg Community Partnership
 Palmetto Conservation Foundation

Map By Tom Savage
 Date 2.28.2003